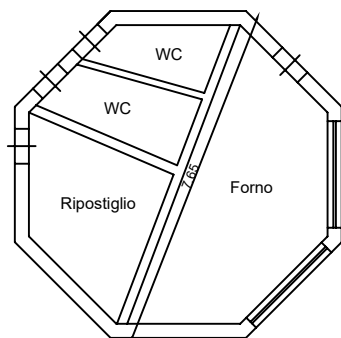
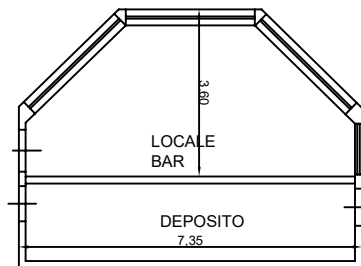


### CORPO 1



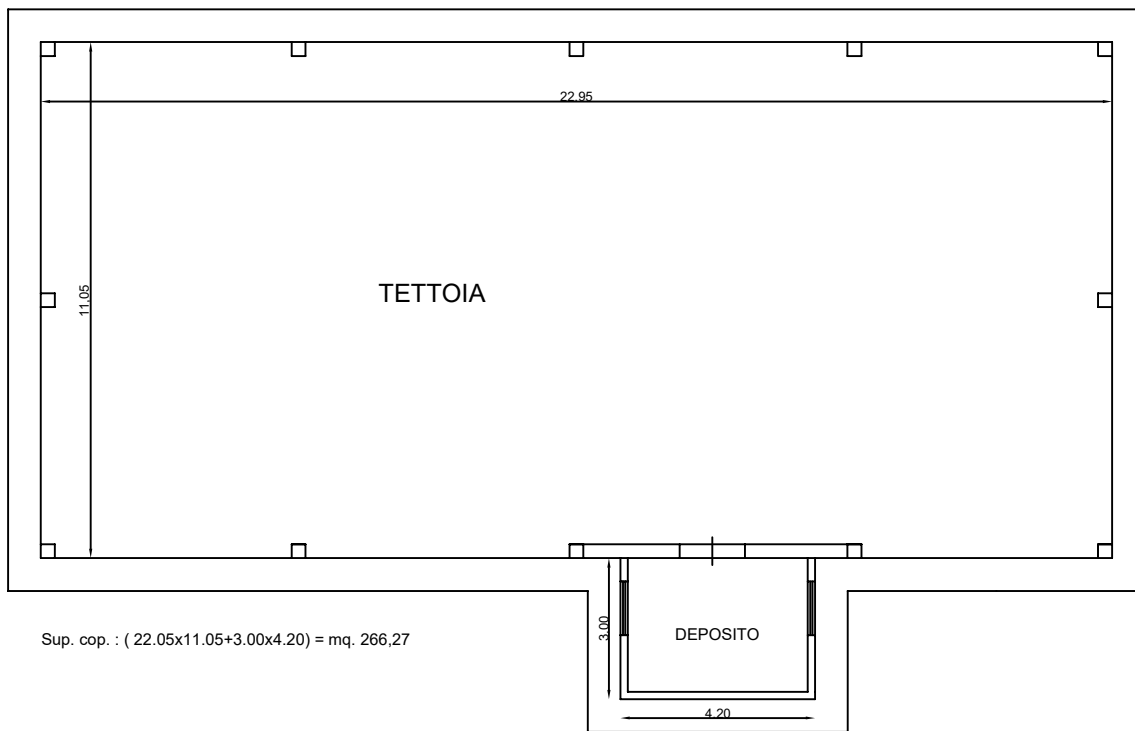
Sup. cop. mq.40,82  
Volume mc.112,80

### CORPO 2



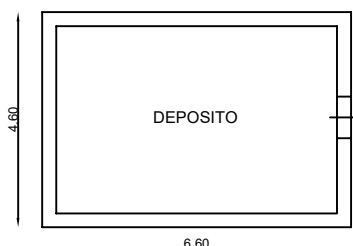
Sup. cop. mq.36,00  
Volume mc.106,56

### CORPO 3



Sup. cop. : ( 22.05x11.05+3.00x4.20) = mq. 266,27

### CORPO 4



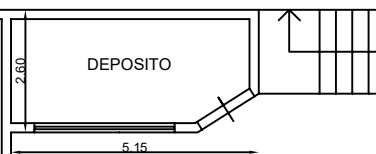
Sup. cop. mq.30,36  
Volume mc.72,864

### CORPO 5



Sup. cop. mq.35,50  
Volume mc.83,425

### CORPO 6



Sup. cop. mq.13,40  
Volume mc.29,480

